

National Day of Mourning Declared

IN response to the devastating 7.7 magnitude earthquake that struck Myanmar on 28 March 2025 at 12:51:02 pm Myanmar Standard Time, causing significant loss of life and widespread destruction, a national mourning period has been declared from 31 March to 6 April 2025. During these seven days, the national flag will be flown at half-mast in grieving the loss of the earthquake victims.

Min Aung Hlaing
Senior General
Chairman
State Administration Council

SAC Chair PM Senior General Min Aung Hlaing speaks with Pakistani PM Mr Mian Muhammad Shahbaz Sharif on phone about Myanmar earthquake



State Administration Council Chairman Prime Minister Senior General Min Aung Hlaing discusses potential earthquake aid with Pakistani Prime Minister over a phone call yesterday.

CHAIRMAN of the State Administration Council Prime Minister Senior General Min Aung Hlaing, reached out yesterday evening to Prime Minister of Pakistan Mr Mian Muhammad Shahbaz Sharif, via phone to explore potential avenues for assistance for loss and damage in Myanmar due to severe impacts of the powerful earthquake on 28 March.

First, the Prime Minister of Pakistan expressed deep condolences regarding

the severe earthquake that recently struck Myanmar, causing significant damage. He shared that Pakistan, along with the people of Myanmar, deeply feels the suffering and extended heartfelt sympathy. The Prime Minister wished for swift rehabilitation efforts to be carried out in Myanmar and expressed hope that Myanmar would quickly recover from the devastation. In the coming days, the Pakistani government and people will send 35 tonnes of humanitarian aid materials

to Myanmar through two air shipments, followed by 17 additional tonnes of rescue equipment. The Pakistani government also pledged to continue providing any further assistance required by Myanmar. He expressed the hope that Myanmar would overcome the difficult period it is facing as soon as possible and emphasized the close, friendly, and cooperative relationship between the two countries, which they aim to further strengthen in the future.

The Chairman of the State Administration Council Prime Minister expressed his gratitude for the kind words and assistance provided by a friendly country. He also affirmed that they will continue to cooperate and work together based on opportunities for collaboration. He also expressed appreciation for the telephone communication, the expression of condolences by the people of Pakistan, and the delivery of humanitarian aid from Pakistan.

SEE PAGE 3

NATIONAL

Residents Urged to Prioritize Public Safety Amid Armed Terrorist Threats

ARMED terrorists have been launching attacks by using residential homes and administrative buildings in towns and villages as cover, where they have forcibly settled. They aim to shield themselves from Tatmadaw counterattacks while also persuading temporarily displaced persons to return to their native areas and recruiting new members. That enables terrorists to use civilians as human shields. Tatmadaw is committed to safeguarding the sovereignty of the State and will respond to these threats based on intelligence and prevailing conditions. Therefore, residents in areas where terrorists have taken control must prioritize their safety and protect themselves from being exploited by these groups.

(Excerpt from guidance given by Chairman of the State Administration Council Prime Minister Senior General Min Aung Hlaing to Shan State cabinet members and state-level departmental officials on 3 September 2024)

SAC Chair Defence Services C-in-C Senior General Min Aung Hlaing extends support to earthquake victims and Tatmadaw families

CHAIRMAN of the State Administration Council Commander-in-Chief of Defence Services Senior General Min Aung Hlaing, accompanied by senior Tatmadaw officers from the Office of the Commander-in-Chief, yesterday morning, inspected medical treatment provided for civilians, service personnel, Tatmadaw members and families who sustained injuries in the earthquake at the Trauma and Orthopaedic Ward of the Defence Services General Hospital in Nay Pyi Taw.

The Senior General cordially met the patients individually and asked about the conditions of injuries and the progress of health conditions. He also comforted and presented cash awards to them. The Senior Gen-

eral instructed the Director of Medical Services and officials to constantly monitor the health conditions of the patients to provide necessary treatment and arrange for them to have convenient accommodation, food and administrative measures.

The Defence Services General Hospital in Nay Pyi Taw provided necessary medical treatment to some 600 patients including civilians, State service personnel, Tatmadaw members and families who sustained injuries in the earthquake and managed emergency surgical operations on 30 persons. At present, the hospital admits 42 injured civilians, State service personnel, Tatmadaw members and families with necessary healthcare services. — MNA/TTA



The Senior General shows compassion and support to earthquake victims in the Nay Pyi Taw Council Area.

SAC Chair PM Senior General Min Aung Hlaing speaks with Pakistani PM Mr Mian Muhammad Shahbaz Sharif on phone ...

FROM PAGE 1

The two countries enjoy a deep and cordial relationship. He also values the valuable communication and support extended by Pakistan. As of noon today, Myanmar has reported 2,065 fatalities due to the earthquake, with over 3,900 injured and approximately 270 people still missing. The 28 March, when the earthquake occurred, was a Friday, which is a day for Islamic prayers and

supplications. Due to this, some damage and losses occurred. The Senior General said that currently rescue operations are being conducted. Regarding the posts on social media that claim around 700 Muslims were killed while praying, this is not true. The actual number is closer to around 500. The bodies of the deceased have already been recovered during rescue operations, and efforts to search and rescue others are still ongoing.

Afterwards, the Prime Minister of Pakistan said he expressed heartfelt recognition and acknowledgement of continued efforts being made for search and rescue operations regarding the casualties sustained in this incident informed by the Prime Minister of Myanmar. He also prays to their Lord for the swift recovery of affected Myanmar citizens. He wishes to express recognition of Myanmar's efforts

being made under challenging circumstances, and he would also like to mention that Myanmar can contact Pakistan at any time for further assistance if needed. Moreover, he said Pakistan has made arrangements to ensure that the rescue supplies, medicines, and ready-to-eat food sent from our country will reach Myanmar within 24 hours.

Next, the Chairman of the State Administration Council

Prime Minister expressed sincere thanks for the condolences and support sent by the people of Pakistan. He also reiterated his expression of gratitude for the relief materials provided to the people affected by the earthquake. It was further mentioned that, as friendly countries, both nations will continue to strengthen their cooperation. He also expressed appreciation for the words of encouragement and support. — MNA/TTA

NATIONAL

SAC Chair PM Senior General Min Aung Hlaing oversees earthquake rescue and relief efforts in Nay Pyi Taw

CHAIRMAN of the State Administration Council Prime Minister Senior General Min Aung Hlaing yesterday afternoon inspected rescue, relief and rehabilitation measures for the earthquake victims in Nay Pyi Taw Council Area.

He viewed round repair of quake-affected damaged roads in towns for temporary use in Nay Pyi Taw Council Area by car.

At the Paunglaung People's Sports Ground in Pynmana Township, the Senior General asked officials about accommodation for the people, supply of water and electricity and toilet facilities. In his guidance, he stressed the need to open a temporary hospital and relief camp in the sports ground to provide medical treatment for the injured people. Moreover, it is necessary to arrange mobile hospitals and mobile operation theatres. In addition to ensuring



State Administration Council Chairman Prime Minister Senior General Min Aung Hlaing looks round the Paunglaung People's Sports Ground yesterday.

water and power supply for the convenience of victims, officials need to issue tents and mobile toilets for them. Arrangements must be made for those from the damaged staff housings to nearby sports grounds as their accommodation.

On arrival at Nay Pyi Taw

Stadium of the Sports and Physical Education Department in Shwekyapin Ward of Union Territory, the Senior General asked officials about accommodation, water and electricity supply and use of toilets. He also met with injured people who are receiving medical treatment at the

temporary hospital run by the Ministry of Health at the gymnasium and asked about their injuries and health progress.

The Senior General instructed officials to arrange convenience of the patients in water and electricity supply and administrative measures, send

the mobile operation theatre and medical officers from the Tatmadaw for medical treatment of the injured, accommodate medical teams from foreign countries, and provide medical treatment together with the foreign medical squads. — MNA/TTA



Inspection underway at the Nay Pyi Taw Stadium in Shwekyapin Ward.



The Senior General cares for patients.

Global **NEW LIGHT** of MYANMAR

www.gnlm.com.mm



CIRCULATION & DISTRIBUTION

(+95) (01) 8604532,

Hotline - 09 255597511

ADVERTISING & MARKETING

(+95) (01) 8604530,

Hotline - 09 251022355

marketing@gnlm.com.mm

subscription@gnlm.com.mm

Printed and published at the **Global New Light of Myanmar Printing Factory** at No.150, Nga Htat Kyee Pagoda Road, Bahan Township, Yangon, by the **Global New Light of Myanmar Daily** under Printing Permit No. 00510 and Publishing Permit No. 00629.
gnlmnews@gmail.com,
newsroom@gnlm.com.mm
www.gnlm.com.mm

Write for us

We appreciate your feedback and contributions. If you have any comments or would like to submit editorials, analyses or reports please email aungthuya@gnlm.com.mm with your name and title.

Due to limitation of space we are only able to publish "Letter to the Editor" that do not exceed 500 words. Should you submit a text longer than 500 words please be aware that your letter will be edited.

NATIONAL

SAC Vice-Chair Deputy PM Vice-Senior General Soe Win inspects quake-hit areas in southern Shan State



State Administration Council Vice-Chairman Deputy Prime Minister Vice-Senior General Soe Win inspects the use of machinery in rescue and relief operations in Aungban Township, Shan State (South).

DUE to the occurrence of a powerful earthquake on 28 March along with subsequent aftershocks, Sagaing, Mandalay, Magway and Bago regions, northeastern Shan State and Nay Pyi Taw Council Area have been affected. The earthquake caused damage to roads, bridges, and buildings, resulting in casualties and injuries among the people. Search and rescue operations are currently being carried out in the affected areas.

Chairman of the National Disaster Management Committee Vice-Chairman of the State Administration Council Deputy Prime Minister Vice-Senior General Soe Win yesterday morning inspected loss and damage in the earthquake in Aungban and Nyaungshwe townships, Shan State (South).

The Vice-Senior General inspected the collapse and damage of Hotel Aungban in Aungban and rescue operations with the use of heavy machinery. He gave instructions to a member of the Myanmar Engineering Council U Myo Myint and officials from the rescue teams.

He viewed the damage to the three-storey Sasana Hitakari Monastery in the precinct of Aungchantha Buddhism Learning Centre in Aungban and instructed officials to reconstruct buildings for convenient learning of monks and set the dangerous zone around the dangerous buildings.

The Vice-Senior General gave prompt construction for the buildings and convenience of meals for members of the

Sangha to Sayadaw Bhaddanta Pañnavamsa of the monastery and donated alms. He also inspected the maintenance of Pitakat Gonyi Monastery and other buildings and attended to the needs of officials. A total of 375 members of the Sangha pursue religious literature at the monastery.

The Vice-Senior General comforted 28 injured civilians at the Tatmadaw hospital in Aungban and presented foodstuffs. He also viewed the drilling of a tube-well by Kanbawza Alin Group for providing safe water to the hospital and people and presented cash assistance to the group.

In Kayla Village of Nyaungshwe Township, the Vice-Senior General viewed round damaged houses and met residents at the monastery. He explained rehabilitation process with removal of damaged houses and buildings, checking dangerous buildings and plans to abolish them if necessary, reconstruction of least damaged buildings, distribution of basic foodstuffs and safe water under the arrangement of Shan State Cooperative Department at Nanpan Jetty in the hotel zone with a mobile water purifier, distribution of international aid, plans to distribute relief supplies and cash assistance provided by the National Disaster Management Committee to the affected people, prompt repair of monasteries and schools, and public participation in collection of data on loss and damage. He also fulfilled the needs of residents. He inspected five buildings of

Kayla Village Basic Education High School (Branch) and coordinated with officials to repair the buildings.

The Vice-Senior General presented foodstuffs and cash awards to local Tatmadaw members, MPF members and firefighters in rescue and relief operations at the monastery in Zayatgyi Village.

At the Inlay PhaungdawOo Pagoda, the Vice-Senior General inspected cracks of slabs on the terrace, collapses of religious edifices, and dredging of silt in the lake for good flow of water.

After coordinating with local engineers, the Vice-Senior General instructed officials to repair the buildings to their original state and view the rescue work of Tatmadaw members, MPF members and firefighters.

Engineers and geologists

stated that the main building is in good condition but it has some cracks. As such, Shan State DMC members and experts led by the Shan State chief minister will promptly implement the repair of the buildings.

At Nanpan-Inlay People's Hospital, the Vice-Senior General comforted 18 civilians who sustained injuries in the earthquake and provided cash assistance.

In the meeting with Shan State DMC members at the hall of Eastern Command Headquarters, the Vice-Senior General recounted that the Prime Minister gave guidance to prompt clearing of debris, total demolishing of almost collapsed buildings, conducting soil tests for the construction of high-rise buildings in the rehabilitation process as part of taking lessons from the earthquake-affected buildings.

Private buildings should be demolished systematically if they are no longer suitable for continued habitation. Similarly, government office buildings that are no longer fit for use should be fully demolished. Natural disasters such as annual floods, storms, and earthquakes have caused significant delays in the nation's development efforts led by the government. However, since natural disasters are unavoidable, recovery and reconstruction efforts must be carried out. Therefore, the relevant authorities, departments, and the public are strongly urged to work together in the rebuilding process.

In the Inlay Lake region, houses built on water are constructed using only wooden stilts without a solid foundation on land. Due to the ageing of most structures over time, many houses collapse. When they do, they fall into the surrounding water, causing most fatalities to result from drowning. During rescue operations, injured individuals from damaged structures on land can be assisted. However, since the houses are built on water, many people drown, making rescue efforts particularly challenging. At present, 18 pagodas, three monasteries and nunnery, one bridge, and 157 public buildings were damaged by the earthquake whereas 65 people lost lives and 73 were injured in Shan State.

SEE PAGE 7



The Vice-Senior General views round the damaged structures.

NATIONAL

World leaders extend condolences to SAC Chair PM Senior General Min Aung Hlaing

LEADERS and Heads of four countries sent messages of condolences to State Administration Council Chairman Prime Minister Senior General Min Aung Hlaing expressing deep condolences over the loss of lives, damages and injuries after a 7.7 magnitude earthquake hit central Myanmar on 28 March.

President of the People's

Republic of China Xi Jinping, Chinese Premier Li Qiang, King of Cambodia Preah Bat Samdech Preach Norodom Sihamoni, Speaker of Cambodia Senate Hluttaw Samdech Akka Moha Sena Padei Techo Hun Sen, Cambodian Prime Minister Hun Manet, Sultan of Brunei Hassanal Bolkiah Muiz'zaddin Wad'daulah, President Daniel Ortega Saave-

dra and Vice-President Rosario Murillo of Nicaragua sent messages of condolences to State Administration Council Chairman Prime Minister Senior General Min Aung Hlaing.

The messages said they were shocked and saddened to learn of the strong earthquake in Myanmar, which caused heavy casualties and property losses.

They mourned the deaths and extended heartfelt condolences to the bereaved families, the injured and the people affected by the quake. They are also ready to provide assistance to Myanmar and support Myanmar people to overcome the disasters and rebuild as quickly as possible. They also believe that the Myanmar people in the quake zone

can overcome the disasters and establish a fine social community as quickly as possible under the firm leadership of the Myanmar government. Those who participate in rescue work should be appreciated, and may all the deceased rest in peace and those injured recover quickly. They also stand with Myanmar people during such a period. — MNAKTZH

**Senior General Min Aung Hlaing
State Administration Council Chairman and Prime Minister
Republic of the Union of Myanmar
Nay Pyi Taw**

Excellency,

I was shocked to learn of the strong earthquake in Myanmar, which caused heavy casualties and property losses. On behalf of the government of the People's Republic of China and the people, I mourn the deaths and extend sincere condolences to the bereaved families, the injured and the people affected by the quake. China and Myanmar are a community of shared future sharing weal and woe, and the two peoples enjoy a profound fraternal friendship. China is ready to assist, and support efforts to overcome the disaster and rebuild homes at an early date.

Xi Jinping
President
People's Republic of China

**Senior General Min Aung Hlaing
State Administration Council Chairman and Prime Minister
Republic of the Union of Myanmar
Nay Pyi Taw**

Distinguished Prime Minister,

I would like to say that I am shocked and saddened to learn that Myanmar has been affected by a severe earthquake, and the lives and properties of Myanmar have been destroyed. On behalf of the Chinese government, we express our deepest condolences over the loss of lives and comforted their families in the quake zone.

We also believe that the Myanmar people in the quake zone can overcome the disasters and establish a fine social community as quickly as possible under the strong and firm leadership of the Myanmar government.

Li Qiang
Chinese Premier
People's Republic of China
29 March 2025

**His Excellency
Senior General Min Aung Hlaing
Chairman of the State Administration Council
Republic of the Union of Myanmar**

Your Excellency,

It is with great sadness that I learned of the loss of lives and widespread destruction resulting from the recent earthquake in Myanmar.

The Government and people of Brunei Darussalam join me in expressing our deepest condolences to you, the people of the Republic of the Union of Myanmar, particularly the bereaved families and communities affected by this disaster.

With my deepest sympathies.

Sultan Haji Hassanal Bolkiah
of Brunei
29 March 2025

**Senior General Min Aung Hlaing
Chairman of the State Administration Council
Prime Minister of the Republic of the Union of Myanmar**

Mr Chairman,

On behalf of the people of the Kingdom of Cambodia, I convey to Your Excellency and the people of the Republic of the Union of Myanmar, and particularly to the families of the victims, our deepest sympathy and sincere condolences for the loss of lives and injuries to many people during a powerful earthquake that struck central Myanmar.

We share in the grief and join in the prayers of the citizens of the Republic of the Union Myanmar. May the citizens rest in peace. We also wish a speedy recovery to all the wounded persons.

The courageous rescue efforts in the affected areas are laudable.

With heartfelt compassion,

Norodom Sihamoni,
King of Cambodia

**HE Senior General Min Aung Hlaing
Chairman of the State Administration Council
Republic of the Union of Myanmar
Nay Pyi Taw**

Excellency,

I am deeply saddened after learning about the devastation, including the loss of lives, injuries, severe damage to the property as well as infrastructure, and the evacuation of many families caused by the catastrophic earthquake, impacting mainly the Mandalay region of the Republic of the Union of Myanmar.

In this very difficult time, on behalf of the people of the Kingdom of Cambodia, I wish to extend my heartfelt condolences and sympathy to you and, through you, to the families and communities, the Government, and the people of the Republic of the Union of Myanmar for these losses. May the deceased rest in peace, and I wish for the swift and complete recovery of those injured and affected by this terrible disaster.

Please accept, Your Excellency, the renewed assurances of my highest consideration.

Samdech Akka Moha Sena Padei Techo Hun Sen
Acting Head of State of the Kingdom of Cambodia
Phnom Penh, 29 March 2025

**Your Excellency
Senior General Min Aung Hlaing
Prime Minister
Chairman of the State Administration Council of the Republic of the Union of Myanmar
Nay Pyi Taw**

Brother Prime Minister:

We are dismayed to hear about the disaster that occurred in Mandalay, Myanmar, in the morning Nicaragua time, and midday in Myanmar, with an initial toll of nearly 200 people dead and more than 700 injured.

Familiar with this type of tragic event and the suffering, pain, and material losses it causes to our people, we extend best wishes for your people to turn into normalcy. Nicaragua thanks and recognizes your government and Myanmar people.

Daniel Ortega Saavedra
Rosario Murillo

Announcement for well-wishers to donate cash to severely earthquake victims

AN announcement has been issued that a donation ceremony will be held in Nay Pyi Taw Union Territory on 1 April 2025 for people who fell victims to a powerful

earthquake measuring 7.7 on the Richter Scale struck with its epicentre about 21 kilometres northeast of the Mandalay Seismological Observatory at approximately

12:51 pm Myanmar Standard Time on 28 March 2025. Well-wishers who wish to donate can contact the following individuals: -

Nay Pyi Taw
Daw Lei Lei Aye
Director-General
Department of Disaster Management
067 3404701, 09 2021491

U Win Shwe
Deputy Director-General
Department of Disaster Management
067 3404702, 09 254170011

Daw Phyu Phyu Win
Director
Department of Disaster Management
067 3404703, 09 43054844

FROM PAGE 6

His Excellency Min Aung Hlaing
Chairman of State Administration Council
Republic of the Union of Myanmar
Nay Pyi Taw

Your Excellency,

I am profoundly saddened to hear about the devastating earthquake that struck central Myanmar on the afternoon of 28 March 2025, resulting in the tragic loss of lives, injuries, and widespread property damage.

On behalf of the Government and the people of the Kingdom of Cambodia, I wish to extend my heartfelt condolences and deepest sympathies to Your Excellency, the Government, and the people of Myanmar, especially to the bereaved families and all those affected by this unfortunate natural disaster. Our thoughts and prayers are with the victims, and we hope for the swift recovery of those injured.

Cambodia stands in unwavering solidarity with the people of Myanmar during this challenging time. I am confident that, under your wise leadership, Myanmar will overcome this calamity and emerge stronger.

Please accept, Your Excellency, the renewed assurances of my highest consideration.

Samdech Moha Borvor Thipadei Hun Manet
Prime Minister of the Kingdom of Cambodia
Phnom Penh 29 March 2025

SAC Vice-Chair Deputy PM Vice-Senior General Soe Win inspects quake-hit areas in southern Shan State

FROM PAGE 5

As a state-level Disaster Management Committee (DMC), various subcommittees have been established, including those for search and rescue, data collection, reconstruction, education, and healthcare. However, in carrying out data collection efforts, it is suggested that, instead of assigning personnel from disaster-affected areas, officials from other unaffected regions should be brought in for greater efficiency. Moreover, the Prime Minister has instructed that land selection be carried out and submitted for the construction of hospitals to support the healthcare needs of the local people in the affected villages of Kalaw and Nanpan. In the meantime,

a temporary hospital will be set up at the Kalaw Monastery. Furthermore, a special mobile medical team consisting of specialists from Sao San Tun General Hospital and the Tatmadaw Hospital No 2/700 will be deployed starting on 1 April. It has been reported that due to the recent powerful earthquake, the nationwide death toll has reached nearly 1,700.

Attendees discussed loss and damage in the region, plans, supply of tents, drinking water and electricity, plans of DMC to distribute basic foodstuffs and cash assistance, safe accommodation for travellers at hotels, and security measures. The Vice-Senior General attended to the needs. — MNA/TTA

SAC Member DPM inspects earthquake-affected staff housing, relocation of staff

MEMBER of the State Administration Council Deputy Prime Minister and Union Minister at the Prime Minister's Office Admiral Tin Aung San gave words of encouragement to earthquake-affected staff families of the Ministry of Electric Power, Ministry of Energy and Ministry at the Prime Minister's Office in Nay Pyi Taw yesterday.

Deputy Prime Minister Admiral Tin Aung San and Union Minister for Electric Power U Nyan Tun inspected the yard of Paunglaung hydropower station

in Zeyathiri Township where staff members of the Ministry of Electric Power with accommodation difficulties due to the earthquake impacts are relocated and staff members at Kengtawng hall, Nancho hall and Shweli hall.

At Nay Pyi Taw Central Training School of the Ministry of Electric Power, the Admiral and party gave words of encouragement to staff and their families and inspected accommodation for the staff at the training lecture hall and hostels.

The Admiral and Union Min-



SAC Member Deputy Prime Minister Union Minister at the Prime Minister's Office Admiral Tin Aung San encourages staff families in Nay Pyi Taw yesterday.

ister for Energy U Ko Ko Lwin looked into loss and damage of the staff housing of the Ministry of Energy, rescue and relief measures, supply of water and running of a temporary clinic.

They also viewed the opening of a temporary relief camp 1 for 48 households in Dekkhinathiri Township and camp 2 in Zabuthiri Township for 100 households.

At Gangaw housing in Za-

buthiri Township, the Admiral and party met with earthquake-affected staff families of the Ministry at the Prime Minister's Office and presented foodstuffs. — MNA/TTA

OPINION

Foster a corruption-free society

CORRUPTION and bribery have been increasingly prevalent in many countries worldwide over the years, resembling a global pandemic. This issue fuels corruption not only in State-owned industries and enterprises but also in privately-run businesses and even some charitable organizations.

Selfishness is a fundamental root cause of corruption. Individuals who engage in corrupt practices are driven by selfishness, motivated by greed and a desire to acquire more possessions, often at the expense of others. They are willing to take these possessions through both fair and unfair means. As a result, they gradually disregard rules, regulations, laws, and universal principles, all in the pursuit of accumulating ever more wealth.

Moreover, corruption is a crime that can mostly be committed by authorized individuals in the majority of countries of

Therefore, authorities need to use State power as well as departmental authority to promote the prosperity and well-being of the people. At the same time, administrative officials from the grassroots level to higher levels must avoid corruption and bribery. While countries worldwide strive to eliminate corruption through various ways and means, none have fully eradicated it. However, continuous efforts should be made to minimize corruption as much as possible.

Administrative officials from the grassroots level to higher levels must avoid corruption and bribery. While countries worldwide strive to eliminate corruption through various ways and means, none have fully eradicated it. However, continuous efforts should be made to minimize corruption as much as possible.

Whatever the case, the efforts of relevant governments play a key role in shaping a society free from corruption or at least mitigating it. Singapore's Prime Minister Lee Kuan Yew emphasized that anti-corruption laws should require individuals possessing assets beyond their declared income to prove their legitimacy. This notable remark serves as a valuable guideline for countries worldwide in their fight against corruption to emerge a prosperous and pleasant society with flourishing compassion and consideration of the people to each other.

the world. It directly undermines the rule of law, negatively impacting the quality of life for people in society. As a result, those involved in corruption, particularly in groups, are more likely to commit further criminal offences, including violent acts, coercion, and threats to public safety.

The impacts of corruption vary across countries. Generally, corruption can be classified into three types: inevitable corruption, regional corruption, and systemic corruption. Among these, inevitable corruption may occur occasionally and is relatively easier to control. However, corruption in various regions is more challenging to address. Moreover, systemic corruption is the most difficult to control and has a severe impact on the national economy."

Therefore, authorities need to use State power as well as departmental authority to promote the prosperity and well-being of the people.

At the same time, administrative officials from the grassroots level to higher levels must avoid corruption and bribery. While countries worldwide strive to eliminate corruption through various ways and means, none have fully eradicated it. However, continuous efforts should be made to minimize corruption as much as possible.

The Burma Circle of the Geological Survey of India and their Contributions to the Geology of Myanmar

EPISODE:60

JADEITE FROM BURMA

This article serves as a continuation of Episode 59, "Jadeite from Burma", originally reported by HL Chhibber in 1934. It provides further insights into the regional and specific geology of the jadeite mining area. Due to space constraints, a summary of the report is included.

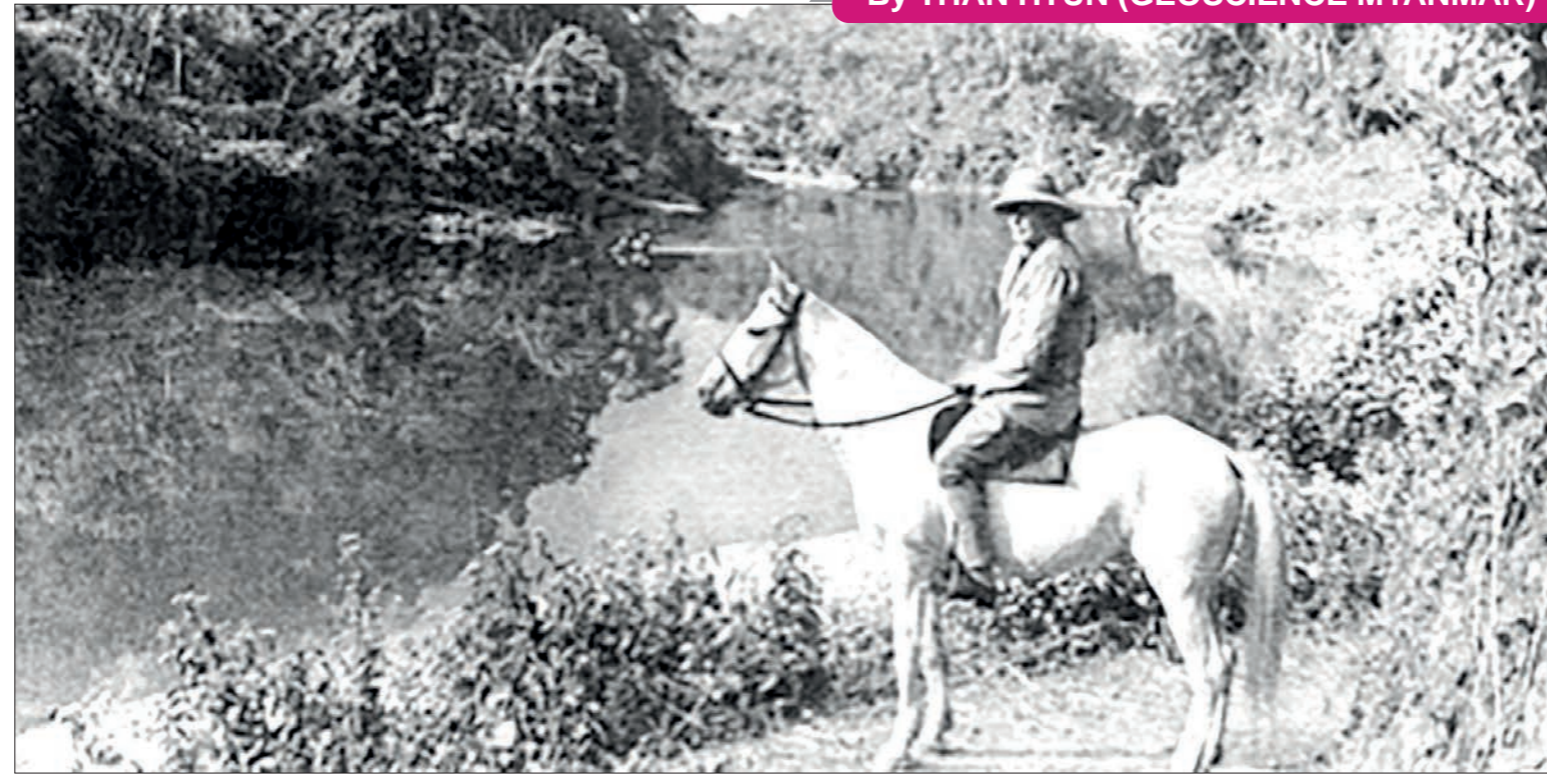
Spotted actinolite-zoisite-schist with pegmatite injections.

A specimen collected from the Nangma hka just a little south of "h" of hka (92 C/6), consists of granular aggregates of actinolite, zoisite, epidote, and vesuvianite with a bit of augite, quartz, and feldspar. Of these minerals, zoisite is the most interesting and forms a fair proportion of the rock. The schist is injected with fine pegmatite consisting of quartz and muscovite.

Mica-pegmatite: Mica-pegmatites were observed in the Sanhka Chaung, about 2 ¼ miles southwest of Kansai (25° 47' 1", 96° 22' 48"). They consist of a granitoid aggregate of quartz, feldspar, and muscovite, the last mineral occurring in elongated blades. It is also present as inclusions in feldspar, and in places, the feldspar and muscovite form a micrographic intergrowth and enclose sections of quartz.

Hornblende-peridotite: Specimens of a very interesting rock were obtained from the first stream, en route to Sietauung, about half a mile north-east of the "1316" hill marked on the map (sheet 92 C/6). Macroscopically, the rock is a beautiful aggregate of glistening black crystals of hornblende and pale green olivine. A thin section consists almost entirely of bluish-green hornblende (smaragdite) with clear olivine, diopside, and greenish augite. The rock is a hornblende-peridotite near the hornblende of Dana. A similar rock was discovered as an ejected block from the Twindaung crater in the Lower Chindwin region.

Granite-gneiss: A coarse porphyritic granite-gneiss, which is interbedded with the crystalline



Arthur S Vernay at the Uyu River near Lonkin, 1943.

schists, is seen in the Sage hka, a stream that joins the Hkara kha about one furlong from the latter's confluence with the Tanai kha on one-inch Survey of India Sheet 92 C/13. The gneiss shows a texture varying from that of a fine-grained schistose rock to that of a coarse granite gneiss.

Serpentine Peridotites.

An extensive complex peridotite, which in places has been partially or wholly altered to serpentine, extends southwards from the Sanhka kha (on the one-inch sheet 92 C/5) and a tributary of the Namsai kha to the latitude of Haungpa (25° 30' 48", 90° 6' 15"). A W G Bleek depicted it as two separate outcrops, but it is one continuous mass, as seen in the Uru chaung below Mamon (25° 35' 10", 96° 15' 57"). Another outcrop on the one-inch sheet forms the hills "1448" and "1660," while another mass, slightly east-north-east of Kansai, forms hill "2162" (one-inch sheet 92 C/5), etc. The serpentinitised dunitite from Tawmaw with a density of 2.795-2.802 on analysis by M Raoult yielded the following results:

SiO₂ = 34.34, Al₂O₃ = 0.37, Fe₂O₃ = 3.60, FeO = 7.04, MnO = 0.15, MgO = 42.58, CaO = 0.54, Na₂O = 0.41, K₂O = 0.17, P₂O₅ = tr, H₂O + = 10.12, H₂O = 0.31, Cr₂O₃ = 0.49

Granites.

In the Myitkyina district of the Jade Mines area, granite occupies a wide expanse of country, forming thickly forested hills up to 1,500 ft. in height and scattered knolls. The wide extent of the granite suggests that it has the form of a batholith, and it may be regarded as complementary to the ultrabasic complex described above and of approximately the same date. In the main, the rock is a medium-grained pink or grey granite, a type containing biotite being dominant. In addition to this, however, two-mica granite, hornblende-granite, and microgranite, as well as more basic types, including monzonites, are well represented. At the same time, diorite xenoliths in the acid rocks may well be interpreted as digested fragments of even more basic, early types. Pegmatites and aplites represent magmatic residue, while the final product of consolidation was quartz, which frequently veins the granite. These rocks are of special significance in connection with the problem of the origin of the unique jadeite-albite rocks, considered in detail below.

Altered Picrites and Volcanic Breccias.

Locally volcanic rocks, associated with highly altered picrites, occur; and perhaps represent the

extrusive phase of the same igneous cycle that gave rise to the ultrabasic and acid complexes described above. As they are of no significance in connection with the genesis and exploitation of the jadeite-bearing rocks. Some notes on Altered andesite-tuff, Quartz-hornblende-dolerite, and Siliceous injections are discussed in the book.

The Tertiary Rocks.

The author has classified the Tertiaries of this region as follows:

(2) Naming Series - Mio-Pliocene.

(1) Hkuma Series - Oligo-Miocene.

The Hkuma Series.

Good sections of the Hkuma Series are exposed along the Shadu, Tagam, Hkuma, and Hkaka streams, of sheet 92 C/13, but since they were first met in the Hkuman kha and also from the high hill, 4,982 feet above sea level, known as Hkuma Bum, the author has designated them the Hkuma Series. Sandstones with occasional interbedded layers of shale or argillaceous sandstone are predominant. In places, they are finely laminated, while in others, they are coarse and pebbly. The most striking feature is their extremely well-bedded character. They are greyish, greenish, whitish, pale-yellow, or reddish, sometimes with black carbonaceous

streaks. In the Shadu kha alone, about 10,000 feet of these sandstones are exposed. In the Tagam hka, sandstones are interbedded in places with black carbonate shales, which are sometimes very friable. Both sandstones and shales contain well-preserved fossil leaves; those from the neighbourhood of Hwehka include *Tetranthera hwekonsis*.

The shales are generally of a greyish colour and thin sections show dark-brown carbonaceous matter together with a considerable amount of calcite, some quartz, and a little mica. A number of foraminifera belonging to the family Globigerinidae were observed in the shales from Hwehka (25° 29' 3", 96° 16' 43"), and this tends to prove that a small inlet of the deep sea existed in the neighbourhood. This must have undergone very rapid changes as is shown by the interbedding of conglomerates, containing boulders of jadeite, various types of serpentines, peridotite, hornblende, graphite, mica and quartz-schists, proving that these rocks were exposed when the Tertiary sediments were being deposited. Bands of finely jointed, black, carbonaceous limestone also occur. The occurrence of coal and lignite is noteworthy.

On sheet 92 C/13, their junction with the crystalline schists and serpentines is faulted, as

shown in the Hkuma and the Hshamshing hkas. Similar rocks are met within the upper course of the Namjan kha, on sheet 92 C/5, and the upper portion of 92 C/6. They are freshwater equivalents of the Pegu Series met with farther south, but their base may touch the Upper Eocene, as the heavy-mineral assemblages of some of the specimens correspond with those of the Barial Series (Eocene-Oligocene) of Assam.

Naming Series.

Since the Upper Tertiary rocks containing fossil wood were first met near Namting (25° 38', 96° 27'), they have been called the Naming Series. The type area lies between Namting and Lonkin (25° 39', 96° 22'), which are eight miles apart. Their thickness must be considerable, since, in places, the strata are vertical. They consist of sandstones, shales, and conglomerates. The sandstones are of various colours, coarse to medium grain size, and sometimes pebbly. They contain mineral minerals, but quartz and feldspar are predominant. Grains of epidote, glauconite, chlorite, and serpentine are quite common, while muscovite, biotite, haematite, chromite and calcite also occur. Small grains of graphite and graphite schist are also present, while grains of jadeite prove that the intrusion of the jadeite-bearing rocks must have preceded the deposition of these rocks. Some of the sandstones are calcareous, but the majority are argillaceous. Small trunks of silicified dicotyledonous fossil wood were seen about a mile west of Namting, and small stumps of fossil trees, comprising both palms and dicotyledons, were found a little southeast of Namyong (25° 40', 96° 26'). The inner portion of some is carbonized, but the outer is silicified.

Similar rocks are exposed in the Tarong hka near Tarongyang (25° 40', 96° 45'), and the Tertiary rocks forming the low hills near Nanyaseik (25° 37', 96° 35') also belong to this series, which is equivalent to the Irrawaddy Series. Specimens collected from them yielded heavy minerals, which, with very few exceptions,

agree closely with those from the Tipam Series of Assam.

The later-Tertiary Plutonic Rocks. Gabbro.

Gabbro first appears about one and three-quarter miles west-south-west of Δ 5124; in the Namjan hka which has cut a gorge with cliffs as far as its junction with the Loimye hka. From the latter point, the rock ascends and is exposed at about 750 feet above the level of the stream and is overlain by the volcanic deposits of Mount Loimye. A little over half a mile north of Δ 5124 it again makes its appearance and forms the "4842" Bum-i-Bum, and "4858" hills, whence it extends northwards as far as the headwaters of the Namjan hka where the latter bifurcate into the Tertiaries; in places, lit-par-lit injection is seen, and xenoliths of the latter occur in the former. It is very finely banded locally, and towards its western boundary, easterly dips ranging from 30°-50° are observed. Similar banding has been recorded in the case of the Tertiary gabbro of Skye. East of Namjan hka, north of its confluence with the Loimye hka for about 2 miles, the gabbro comes into contact with greenish-black basaltic tuff and, as a result of the intrusion, the latter has been baked, hardened, bleached, and metamorphosed. Very probably, this marks the position of one of the older vents, which served as passages for the uprise of the basic eruptive rocks.

The form of intrusion near the eastern margin appears to be a concordant, inclined composite sill or sheet. The rock is generally greyish-mottled with ferromagnesian minerals and shows considerable variation in texture. The different modifications such as massive, coarse gabbro, microgabbro (porphyritic), quartz-augite-enstatite gabbro, micrographic gabbro, granodiorite, quartz-diorite, camptonite, quartz-porphry are described briefly.

The Uru Boulder Conglomerate. The Plateau Gravels of Upper Burma are represented in the north of the Myitkyina district by

a boulder conglomerate named by the author the Uru Boulder Conglomerate, after the river responsible for its formation.

The outcrop of the conglomerate attains a maximum width of over four miles in the longitude of Mamon, which was formerly very famous for its jadeite workings, and thence it extends to the north and northeast as a belt with an average width of two miles on the right bank of the river. The thickness of the formation must exceed a thousand feet in places, as is evident from a traverse along any of the tributaries of the Uru, for example, the Sabyi or Mamon Chaungs. In the latter case, there is an abrupt descent from Balahka (25° 37' 30", 96° 17' 1"), which is situated on the conglomerate at a little over 200 feet O D, to the valley of the Mamon (Mamaung) Chaung. The cliffs overlooking the stream are composed entirely of the conglomerate, and no other rock is seen until Hpakan (25° 36' 38", 96° 18' 40") is reached, near the 806 spot-level on the map, sheet 92 C/6, where crystalline schists are encountered.

The age of the conglomerate is probably Pleistocene to Sub-recent. The Uru Boulder Conglomerate is strikingly polygenetic, and the older rocks of the neighbourhood are represented by boulders ranging in size from a few inches to several feet. They comprise several varieties of crystalline schists, including mica, quartz, glaucophane and anthophyllite-schists; plutonic rocks, of which the chief are granodiorite, diorite, and epidiorite; metallic ores, including limonite, haematite, and chromite; and most important from the present point of view, boulders of jadeite, for which the formation is worked. It is locally believed that the jadeite of the boulders in the conglomerate is more "mature" than that of Tawmaw. The obvious difference between the two types is due to the removal, during transport, to the skin of the weathered mineral in the former case.

References: 1. Chhibber, HL, 1934: *The Mineral Resources of Burma, Macmillan, and Co Limited, St Martin's Street, London.*

2. Carter, T Donald, 1943: *The Mammals of the Vernay-Hopwood Chindwin Expedition, Northern Burma, Bulletin Amer. Mus. Nat. Hist., Vol. 82.*

NATIONAL

SAC Members Deputy PMs fulfil needs of quake-affected staff families

STATE Administration Council Member Deputy Prime Minister and Union Minister for Transport and Communications General Mya Tun Oo inspected the collapsed control tower, passenger lounge, buildings of the ministry and staff housing caused by the powerful

earthquake at Nay Pyi Taw International Airport yesterday.

The Deputy Prime Minister also looked into damage to buildings and machinery at the Information Technology and Cybersecurity Department and the participation of Tatmadaw members, Myanmar Police Force members and firefighters in removing the machinery of the department.

General Mya Tun Oo inspected a temporary camp at Nay Pyi Taw Railway Station in Pobbathiri Township where families of Myanmar Railways are relocated with accommodation, food and water supply as well as healthcare.

The Deputy Prime Minister also inspected damaged buildings of the Road Transport

Administration Department (Ywataw), Office No 29, No 2 and No 5 and Myanmar Posts and Telecommunications in Nay Pyi Taw where staff families are relocated temporarily. He fulfilled the needs of staff families of Myanmar Railways and Transport Planning Department at No 8 Basic Education High School and Laykyun Mandaing Monastery.

Likewise, Deputy Prime Minister and Union Minister for Defence General Maung Maung Aye inspected the quake-affected staff housing of the Ministry of Defence yesterday and provided rice, cooking oil, eggs and other foodstuffs to staff for the second time and fulfilled their needs. — MNA/TTA



Deputy Prime Ministers General Mya Tun Oo and General Maung Maung Aye views and meets quake-hit staff families at the temporary camp.

National Day of Mourning Campaign Statement

- The State Administration Council Chairman declared seven days of national mourning from 31-3-2025 to 6-4-2025 over a powerful earthquake of a 7.7 Richter Scale that struck Myanmar at 12:51:02 pm of Myanmar Standard Time on 28 March 2025, leaving massive deaths and damages.
- The day of national mourning will be conducted across the nation at 12:51:02 pm of Myanmar Standard Time on 1 April 2025 as follows: -
 - As part of national mourning, the national flag will be flown at half-staff, and people must bow heads during a minute's silence at the ceremonies being held in front of the flag-staff or appropriate location or ongoing ceremonies.
 - People who are passing through should stop and bow their heads for one minute in silence.
 - A siren will sound at that time as part of mourning.
 - The media should temporarily suspend the broadcasting programmes and broadcast the Logos to commemorate the sadness.
 - Sending Metta, reciting Paritta and prayers and sharing merits at the pagodas, temples and holy places of respective religions.
- Above mentioned procedures will be conducted nationwide and all are urged to participate on the day of national mourning.

Information Team
State Administration Council

MoBA Union Minister assesses earthquake damage and leads relief efforts



SAC Member Union Minister Lt-Gen Yar Pyae views the loss and damage at the MoBA and staff housing.

SAC Member and Union Minister for Border Affairs Lt-Gen Yar Pyae inspected the damage caused by the earthquake at the Ministry of Border Affairs and its staff housing on 28 March.

On 29 March, the Union Minister and his team assessed the damage again, instructed relevant social organizations to cooperate in rescue operations,

and provided encouragement to staff and their families.

On 31 March, the Union Minister and his team oversaw relief efforts at the temporary relief camp set up at the ministry. He met with employees' family members at the camp, offered words of encouragement, inspected office cleanliness, and provided necessary recommendations.

The team then visited the staff housing units affected by the earthquake, observed relief operations conducted by relief teams and social organizations, and presented cash to them.

Finally, the Union Minister and his team met with affected staff and their families, ensuring their relocation to temporary rescue camps as required. — MNA/MKKS

COVID-19 report,
31 March 2025

NEW TESTS

3,398

NEW CASE

NIL

CASUALTIES

NIL

Myanmar National Centre for Diseases Control
Department of Public Health

Union Info Minister discusses assistance for quake-affected staff, families

UNION Minister for Information U Maung Maung Ohn presided over a meeting to assist government employees and their families affected by the earthquake yesterday.

The Union minister first said the staff are facing difficulties in staying at their staff housing, and the officials need to prepare safe shelters for them. In the meantime, only the necessary number of employees required for office duties should go to the office, while the remaining staff should be accommodated in suitable locations. Moreover, officials should arrange and manage administrative matters, such as housing, healthcare,

social welfare, food supply and access to water.

He then appreciated the staff's efforts in broadcasting MRTV and publishing newspapers without fail and highlighted the need to communicate with the Disaster Management Centre — DMC daily to release important information and work together with the departments concerned.

The deputy minister and departmental officials reported on the assistance to staff and families, and news release.

The Union minister made proper instructions and concluded the meeting. — MNA/KTZH



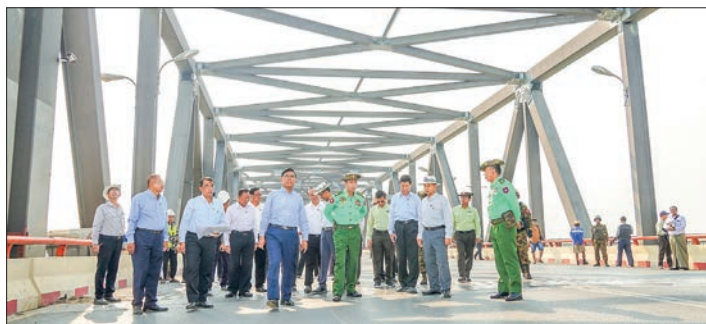
The discussion on the assistance for quake-impacted staff and families underway, led by Union Minister U Maung Maung Ohn.

MoC Union Minister surveys earthquake damage to Ayeyawady Bridge and Mandalay Central Bank site

UNION Minister for Construction U Myo Thant, accompanied by Lt-Gen Myo Moe Aung from the Office of the Commander-in-Chief (Army), Mandalay Region Chief Minister U Myo Aung, the Central Command commander, and other officials, inspected the Ayeyawady Bridge (Yadanabon) to assess earthquake damage and ensure its safe operation.

The director-general of the Bridge Department reported that the earthquake had damaged the bridge, causing the steel beams at the joints between the bridge piers and the main structure to bend. He stated that the bridge's structural integrity had been assessed through visual inspection and explained the conditions under which restricted use would be permitted to ensure the safe passage of people and vehicles.

In response, the Union minister emphasized the importance of the Ayeyawady Bridge (Yadanabon) as a key link between Mandalay and Sagaing Regions, highlighting the need for uninterrupted road communication. He instructed that traffic speed should be reduced to prevent further



Union Minister U Myo Thant and officials views the damage to the Ayeyawady Bridge.

damage and ensure safety. He also stressed the necessity of an urgent inspection by a team of experts and professional engineers to assess the full extent of the damage. Given the occurrence of minor earthquakes in the Mandalay area, he called for continuous monitoring and timely reporting of any further damage to maintain public safety.

Lt-Gen Myo Moe Aung and the Mandalay Region chief minister also instructed officials to conduct a thorough examination and restrict the number of vehicles using the bridge to prevent further structural weakening. They further directed bridge security personnel to report any unusual incidents without delay.

The Union minister and his team, joined by Sagaing Region Chief Minister U Myat Kyaw, then visited the site where the approach road on the Sagaing side of the Ayeyawady Bridge (Yadanabon) had collapsed. He provided guidance on temporary repairs to make the road usable in the short term, as well as plans for long-term durability.

Additionally, the Union minister, accompanied by directors-general and departmental officials, inspected the construction site of the Central Bank of Myanmar (Mandalay Branch). He instructed that construction should only proceed after a thorough structural assessment by experts to ensure the building's safety. — MNA/MKKS

Ayeyawady Foundation delivers aid to Sagaing earthquake victims

THE Ayeyawady Foundation, which has been actively engaged in relief operations in earthquake-affected areas, carried out rescue and relief efforts in Sagaing on 31 March in collaboration with local social organizations.

The foundation provided support to social welfare and rescue organizations working tirelessly in Sagaing to ensure the smooth operation of relief efforts and to meet urgent needs. Assistance was given to Thukhakarri Rescue Team, which received K20 million and 200 cartons of purified drinking water, Ohbo Rescue Team, which was provided with K10 million and 125 car-

tons of purified drinking water, and Minlan Youth Social Organizations, which received K100 million and 100 cartons of purified drinking water. Additionally, Thakyadita Nunnery, which suffered severe damage due to the earthquake, donated K10 million and 125 cartons of purified drinking water.

Furthermore, the Ayeyawady Foundation has deployed machinery, including mini excavators, wheel loaders, and dump trucks, to assist in clearing debris from damaged buildings in Sagaing. The foundation has also provided water tankers to supply clean drinking water where needed. — Shine Htet Zaw/KNN



Relief items are unloaded for Sagaing earthquake victims.

NATIONAL

Honouring Rescue Teams and Mourning the Tragedy: A Statement of Gratitude and Solidarity for Myanmar's Earthquake Victims

MYANMAR people suffered significant loss of life and loss and damage in a very powerful earthquake with a magnitude of 7.7 Richter scale struck at 12:51:02 pm Myanmar Standard Time on 28 March 2025.

Foreign countries sent rescue and relief teams on the humanitarian ground, with support and compassion, helped provide rescue efforts alongside Myanmar's rescue teams to assist in the aftermath of the severe and rare natural disasters faced by the

country. They also delivered much-needed relief supplies. The international teams, together with Myanmar's rescue teams and volunteers, are working tirelessly in the rescue operations, successfully saving those who were trapped alive.

Heads of State from the international community, officials, well-known sports federations and football clubs, eminent persons and organizations sent messages of condolences, expressing their

shared sorrow. They also observed a moment of silence before the start of sports events, conveyed their condolences, and expressed wishes for successfully overcoming the challenges and natural disasters that Myanmar is faced with.

Similarly, the rescue teams, Tatmadaw members, Myanmar Police Force members, volunteers, organizations, and responsible citizens from Myanmar are working together in unity under the leadership of the government

in rescue operations. With collective strength, they are confronting the natural disasters that they are facing with determination and trust, helping one another and overcoming the difficulties together.

The State Administration Council and the Government of the Republic of the Union of Myanmar express heartfelt gratitude for the emergency assistance provided in response to the natural disaster caused by the earthquake in Myanmar and also acknowl-

edge the voluntary efforts of rescue teams, volunteers, and the general public, all of whom have contributed to the rescue operations with the actions in the dispatch of rescue teams and medical treatment teams, the delivery of rescue and relief materials, the sending of condolence letters, the recognition of humanitarian efforts, and the sending of encouraging messages.

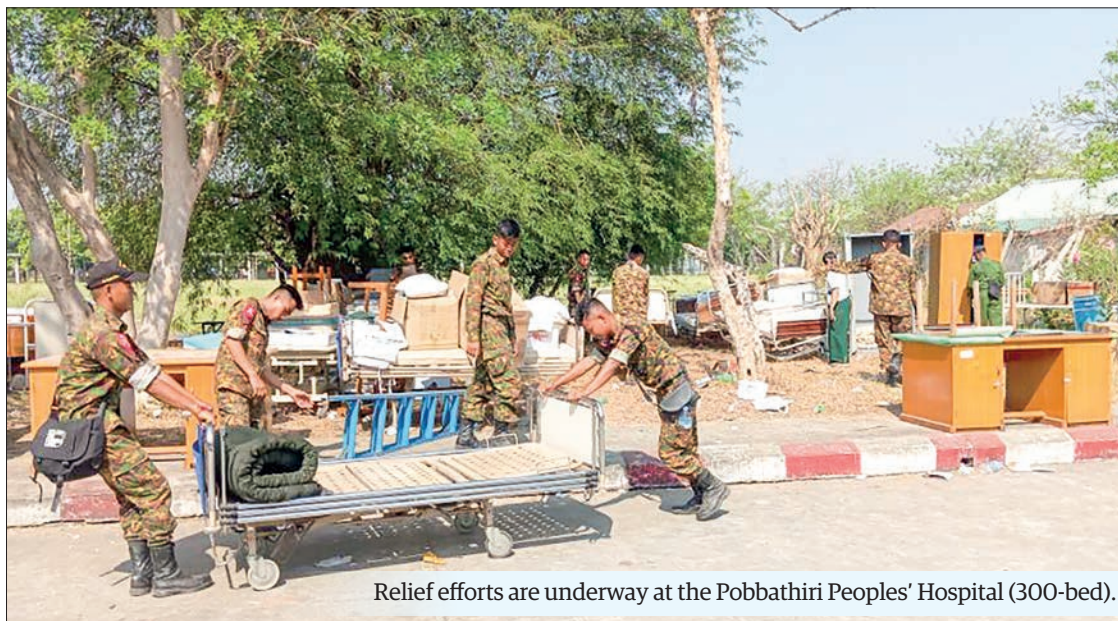
*Information Team
State Administration Council*

Rescue and relief ongoing in quake-impacted areas

A 12:51:02 pm local time on 28 March, a powerful earthquake and subsequent aftershocks struck, affecting Sagaing Region, Mandalay Region, Magway Region, the northeastern part of Shan State, Nay Pyi Taw Council Area, and Bago Region. The earthquake caused damage to roads, bridges, and buildings, resulting in casualties, including fatalities and injuries among the public.

In the earthquake-affected areas, rescue and relief operations are being carried out in a timely manner through the collaboration of Tatmadaw personnel from various military commands, Myanmar Police Force members, firefighters, international rescue teams, government staff, social welfare organizations, and local residents.

Yesterday, Lt-Gen Myo Moe Aung from the Office of the Commander-in-Chief (Army), Mandalay Region Chief Minister U Myo Aung, and Central Command Commander Brig-Gen Kyaw Ko Htaik visited Myanma Economic Bank 1/2 in Aungmyaythazan Township to inspect the smooth disbursement of salaries and pensions for civil servants. They also observed the sale of essential consumer goods at affordable prices, organized in collaboration with the Department of Consumer Affairs and the Mandalay City Development Committee at the sports ground in front of



Relief efforts are underway at the Pobbathiri Peoples' Hospital (300-bed).

the palace in Aungmyaythazan Township.

Additionally, they visited Myat Private High School, Myotaw Mosque, Myoma Mosque, and Moekya Jamai Mosque in Sagaing to oversee ongoing search and rescue operations for those trapped in collapsed buildings, working in coordination with international rescue teams. They also paid visits to sayadaws at various monasteries in Mandalay, where they made donations of alms and other essential items.

Furthermore, they visited the Mandala Thiri Sports Ground in Mandalay to meet and greet the Russian rescue teams who had arrived to assist in relief efforts. During the visit, discussions were held to coordinate the necessary measures

for effective rescue operations.

Similarly, Lt-Gen Phone Myat from the Office of the Commander-in-Chief (Army), Commander of the Southern Command Maj-Gen Kyi Thaik, and other officials visited the areas affected by the earthquake in Toungoo. They observed the rebuilding efforts at the Wailuwun Yeiktha Monastery and Kantha public resthouse, which were severely damaged by the earthquake. They also inspected the condition of the Swa Creek Bridge, located 165th mile on the Yangon-Mandalay Expressway, which had been destroyed, as well as the ongoing repairs to the bridge. Furthermore, they visited the Lawka Marazein NandawOo Pagoda and observed the restoration work being carried out. During

these visits, they coordinated the necessary actions and provided assistance where needed.

Furthermore, rescue efforts are ongoing and medical treatments are being given to injured people in the areas affected by the earthquake in Tatkon Township, Pyinmana Township, Lewe Township, and Ottarathiri Township, as well as in Housing Estate A (63 to 68) and Housing Estate A (27 to 31) in Pobbathiri Township, the People's Hospital (300-bed) and the ancient pagodas in Bagan, restoration and rescue efforts have been carried out. In Mandalay Region, at the temporary hospital in Chanmyathazi Township, Ayeyawady Bridge (Yadanabon), and the places affected by the collapse in Chanayethazan Township. Additionally, rescue work is being

carried out at places such as the Maha Muni Buddha Image and its surroundings, the Great Wall Hotel, U Hla Thein Dhamma Beikman, Sky Villa, the site of the private school in Kyaukse, TadaU Township, Myittha Township, Kume, and areas in Singaing Township.

Rescue and relief efforts are being carried out, and medical treatment provided to injured people also at the Swa Creek Bridge located the milepost 165 on the Yangon-Mandalay Expressway in Bago Region.

These activities are being closely monitored by the chief ministers of each region and state, along with the commanders of respective commands and officials. They are coordinating and ensuring the necessary actions are taken, including the provision of donations for the restoration of pagodas damaged by the earthquake and visiting those injured by the quake who are receiving treatment at hospitals to offer their support.

Additionally, charitable individuals from various regions are also assisting earthquake victims by providing food and drink, preparing meals such as rice and curry, offering clean drinking water, and donating essential items. They have also contributed monetary donations, continuing to provide support in various forms to ensure that those affected are well-cared for. — MNA/KN

NATIONAL

Rescue teams, medical experts, and aid from Laos and China's Yunnan arrive with supplies

THE government is conducting rapid assessments of the damage in earthquake-affected areas and carrying out rescue and relief operations in a timely manner. Additionally, international humanitarian aid continues to arrive, including rescue teams, medical teams of doctors and nurses, humanitarian relief supplies, and medicines

from various countries.

Yesterday afternoon, a search and rescue team, along with doctors, nurses, humanitarian aid supplies, and medicines from Laos and Kunming, China, arrived at the Tatmadaw airport in Nay Pyi Taw.

Officials from the Ministry of Foreign Affairs and the Ministry of Social Welfare, Relief

and Resettlement welcomed the newly arrived international rescue teams, doctors, and nurses at the airport.

These teams will be deployed to different earthquake-hit areas to take search and rescue measures and provide medical treatment to the affected communities without delay. — MNA/KNN



Medicines from Laos arrive at Tatmadaw airport in Nay Pyi Taw.

China delivers first batch of aid to Myanmar for disaster relief

THE Air China's flight from Beijing carrying disaster-relief supplies offered by the Chinese government arrived in Myanmar yesterday to aid the earthquake victims in Sagaing Region, Mandalay Region, Magway Region, northeastern Shan State, Nay Pyi Taw Council Area and Bago Region.

The supplies included tents, medicines, blankets, bedsheets, mosquito nets and commodities weighing 87,075 kilogrammes.

On arrival at the Yangon International Airport, Region Chief Minister U Soe Thein, regional ministers, senior Tatmadaw officers, Chinese Ambassador to Myanmar Ms Ma

Jia and other relevant officials observed the processes.

The Chinese ambassador gave an explanation about the donation, and the regional chief minister expressed gratitude. Efforts are underway to arrange the supplies, which will be sent to disaster-stricken areas shortly. — Zwe Htet Ko (IPRD)/KTZH



Rescue teams, medics, nurses and relief items arrive at Yangon International Airport yesterday.



The first batch of Chinese aid arrives at Yangon International Airport.

Relief items from UAE arrive in Myanmar

THE government investigates the damage in quake-hit areas and conducts the rescue work promptly. It also opens ways for foreign-aided humanitarian in-kind assistance. Three UAE military aircraft carrying UAE rescue teams, medics, nurses and humanitarian supplies arrived at Yangon International Airport yesterday morning.

It included 79 members of

rescue team members, medics and nurses, 15 vehicles and 67,685 kilogrammes of rescue items and supplies.

Yangon Region Chief Minister U Soe Thein, regional ministers and other officials of ministries concerned welcomed and coordinated to distribution of the relief items to quake-hit areas. — MNA/KTZH

Rescue efforts and survival story from Sky Villa collapse

RESCUE operations are being carried out promptly in the earthquake-affected regions by Tatmadaw personnel, members of the Myanmar Police Force, firefighters, international rescue teams, departmental staff, social organizations, and residents, working together to assist.

During these operations, it was reported on social media by the father of the survivors that a grandmother and her two grandchildren were rescued from the collapse of the Sky Villa condo-

minium in Mandalay.

The incident involved a 76-year-old grandmother and her two grandchildren, aged 16 and 13, who were trapped inside the collapsed building and faced life-threatening conditions. The two children, stuck among dust, debris, and rubble, used their mobile phones' flashlights to search for possible escape routes, documented the event, and called out for help to alert rescuers. Fearing for their survival, they also recorded video

messages on their phones so that their remaining family members would be aware of their situation.

As they continuously shouted for help, rescue workers eventually heard them and created a small opening using crowbars. They provided drinking water and assured the trapped individuals that they would be rescued soon. While waiting, one of the children, upon reaching through the small opening where a water bottle had been passed,

discovered a crowbar. Using it, they managed to break apart some rubble and create a passage wide enough to squeeze through. Once they emerged, the rescue team quickly pulled them to safety.

With their location now identified, rescuers were able to continue their efforts and successfully extract the grandmother and the remaining child. The authorities recognised the young girls' bravery, resourcefulness, and ability to remain calm under



A granddaughter shares her survival story alongside her sister and their 76-year-old grandmother.

pressure. Their determination to survive, their selflessness in helping their elderly grandmother, and their effective use of a mobile phone for assistance were acknowledged. A statement was released expressing joy at their safe rescue. — MNA/KNN

Nikkei stock index tumbles 4% on US tariff concerns

TOKYO stocks plunged on Monday, the final day of Japan's 2024 fiscal year, with the Nikkei index ending down four per cent at a seven-month low amid selling triggered by concern over the adverse impact of US tariffs on the Japanese economy.

The 225-issue Nikkei Stock Average slid 1,502.77 points, or 4.05 per cent, from Friday to 35,617.56, its lowest closing since 9 August, and finishing down 11.8 per cent from a year earlier. The broader Topix index finished 98.52 points, or 3.57 per cent, lower at 2,658.73.

All sectors lost ground on the top-tier Prime Market, with decliners led by insurance, nonferrous met-

al, and oil and coal product issues.

The US dollar briefly weakened to the upper 148 yen range in Tokyo, as the yen, seen as a safe-haven asset, was bought on fears of an economic slowdown in the United States due to President Donald Trump's trade policies, dealers said.

At 5 pm, the dollar fetched 149.13-15 yen compared with 149.75-85 yen in New York and 150.38-40 yen in Tokyo at 5 pm Friday.

The euro was quoted at \$1.0831-0832 and 161.53-57 yen against \$1.0828-0838 and 162.18-28 yen in New York and \$1.0786-0788 and 162.21-25 yen in Tokyo late Friday afternoon.

The yield on the benchmark 10-year Japanese



Financial data monitor in Tokyo shows the Nikkei stock index plummeting more than 1,500 points to close at 35,617.56 on 31 March 2025. PHOTO: KYODO

government bond ended at a four-week low at 1.485 per cent, down 0.060 percentage point from Friday's

close. The debt was bought as a safe asset as the Nikkei stock index sharply dropped.

On the stock market, the Nikkei benchmark followed Wall Street's plunge late last week as fears grew

over a potential economic slump accompanied by high inflation in the world's largest economy.

Heavyweight technology stocks fell sharply following declines by their US counterparts, while auto shares were sold off ahead of Trump's additional 25 per cent tariffs on all vehicles made outside the United States, set to take effect on Thursday.

"Concern about the Japanese economy has started to smolder, considering (the tariffs' expected) adverse impact on the auto industry, which is the country's key industry," said Kazuo Kamitani, a strategist at the Investment Content Department of Nomura Securities Co. — Kyodo

New direct air route links China's Lhasa, Nepal's Pokhara

A new direct air route linking Lhasa, capital city of Xizang Autonomous Region in China, and Pokhara, the second-largest city in Nepal, has been launched.

The maiden flight left Lhasa with 107 passengers on board on Monday. It is the second direct passenger air route from Lhasa to Nepal, with the other linking Lhasa to Kathmandu.

The air service is operated by Himalaya Airlines, with the outbound

trip occurring on Monday, and the return flight on Tuesday.

As a new achievement in boosting the interconnectedness between China and Nepal under the Belt and Road Initiative, the inauguration of the Lhasa to Pokhara flight route will enhance Xizang's high-level opening-up and foster cross-regional coordinated development, an immigration inspection officer of Lhasa noted. — Xinhua

CLAIMS DAY NOTICE

M.V ISEACO GENESIS VOY.NO. (255N)

Consignees of cargo carried on **M.V ISEACO GENESIS VOY.NO. (255N)** are hereby notified that the vessel will be arriving on **1-4-2025** and cargo will be discharged into the premises of **AWPT** where it will lie at the consignee's risk and expenses and subject to the byelaws and conditions of the Port of Yangon.

Damaged cargo will be surveyed daily from 8 am to 11:20 am and 12 noon to 4 pm to Claim's Day now declared as the third day after final discharge of cargo from the Vessel.

No claims against this vessel will be admitted after the Claims Day.

Phone No: **2301185**

Shipping Agency Department
Myanma Port Authority

Agent For:

M/S NEW GOLDEN SEA LINES

CLAIMS DAY NOTICE

M.V MAERSK VALENCIA VOY.NO. (511W)

Consignees of cargo carried on **M.V MAERSK VALENCIA VOY.NO. (511W)** are hereby notified that the vessel will be arriving on **1-4-2025** and cargo will be discharged into the premises of **MIP** where it will lie at the consignee's risk and expenses and subject to the byelaws and conditions of the Port of Yangon.

Damaged cargo will be surveyed daily from 8 am to 11:20 am and 12 noon to 4 pm to Claim's Day now declared as the third day after final discharge of cargo from the Vessel.

No claims against this vessel will be admitted after the Claims Day.

Phone No: **2301185**

Shipping Agency Department
Myanma Port Authority

Agent For:

M/S MAERSK A/S

CLAIMS DAY NOTICE

M.V HONG JIA 21 VOY.NO. (2511E)

Consignees of cargo carried on **M.V HONG JIA 21 VOY.NO. (2511E)** are hereby notified that the vessel will be arriving on **1-4-2025** and cargo will be discharged into the premises of **AWPT** where it will lie at the consignee's risk and expenses and subject to the byelaws and conditions of the Port of Yangon.

Damaged cargo will be surveyed daily from 8 am to 11:20 am and 12 noon to 4 pm to Claim's Day now declared as the third day after final discharge of cargo from the Vessel.

No claims against this vessel will be admitted after the Claims Day.

Phone No: **2301185**

Shipping Agency Department
Myanma Port Authority

Agent For:

M/S OCEAN SALUTE SHIPPING PTE LTD

CLAIMS DAY NOTICE

M.V MCL 11 VOY.NO

Consignees of cargo carried on **M.V MCL 11 VOY.NO** are hereby notified that the vessel will be arriving on **1-4-2025** and cargo will be discharged into the premises of **MKH** where it will lie at the consignee's risk and expenses and subject to the byelaws and conditions of the Port of Yangon.

Damaged cargo will be surveyed daily from 8 am to 11:20 am and 12 noon to 4 pm to Claim's Day now declared as the third day after final discharge of cargo from the Vessel.

No claims against this vessel will be admitted after the Claims Day.

Phone No: **2301928**

Shipping Agency Department
Myanma Port Authority

Agent For:

M/S UNIVERSE LOGISTICS INTERNATIONAL CO LTD

CLAIMS DAY NOTICE

M.V CAPE FELTON VOY.NO. (933N)

Consignees of cargo carried on **M.V CAPE FELTON VOY.NO. (933N)** are hereby notified that the vessel will be arriving on **1-4-2025** and cargo will be discharged into the premises of **AWPT** where it will lie at the consignee's risk and expenses and subject to the byelaws and conditions of the Port of Yangon.

Damaged cargo will be surveyed daily from 8 am to 11:20 am and 12 noon to 4 pm to Claim's Day now declared as the third day after final discharge of cargo from the Vessel.

No claims against this vessel will be admitted after the Claims Day.

Phone No: **2301185**

Shipping Agency Department
Myanma Port Authority

Agent For:

(ONE) OCEAN NETWORK EXPRESS LINE

NATIONAL

Indian naval ships arrive at Thilawa Port with rescue supplies

INS Satpura (F-48) and INS Savitri (P-53) of the Indian Navy carrying rescue and relief materials and foodstuffs to be provided as humanitarian aid for earthquake victims of Myanmar anchored at Thilawa Port of MITT in Yangon yesterday afternoon.

At the ceremony to hand over the rescue and relief equipment, the Indian Ambassador to Myanmar explained the purpose of provisions and handed them to Yangon Region Chief Minister U Soe Thein.

Indian naval vessels carried instant noodles, fortified

nutritious biscuits, plastic buckets, plastic cups, personal hygiene materials, tents, tarpaulin sheets, clothes, sanitation equipment and medicines, weighing some 40 tonnes.

At the ceremony, Tatmadaw members from Tatmadaw (Navy), staff from Kyauktan Township General Administration Department and firefighters loaded the relief supplies on board the vehicles. These materials will be sent to the quake-hit areas under the supervision of the Yangon Region government. — Zwe Htet Ko (IPRD)/TTA



Relief items are unloaded from the Indian navy vessels to transport them to quake victims.

CB-KMA Foundation pledges K10B for disaster relief in Nay Pyi Taw, Mandalay, and Bago



This photo shows CB-KMA Foundation Chairman U Khin Maung Aye and his team conducting relief operations.

THE CB-KMA Foundation is actively carrying out relief efforts in areas affected by the earthquake in Mandalay Region, Nay Pyi Taw Council Area, and Bago Region, according to the foundation.

The foundation has donated K5 million to Toungoo General Hospital, where victims from Toungoo and surrounding areas – including Ottwin,

Yedashe, Penwegon, Kywepwe, and Kyaukdaga — are receiving medical treatment for earthquake-related injuries. Additionally, financial assistance of K500,000 per person has been provided to 45 injured individuals.

Furthermore, the CB-KMA Foundation has supported the families of those who lost their lives when a monastery building

collapsed at Wailuwun Sasana Yeiktha in Toungoo Township. The families of one novice and five children who perished each received 1 million kyats, while an injured child received K100,000. Similarly, the families of five men who died when the ceiling collapsed at Kandaw Mosque in Toungoo's Ward 11 during prayers were each given K1 million. The foundation has also donated K38.6 million to places in urgent need in Toungoo. These relief operations are being carried out with the support of CB Bank, Myanmar Metro Bank, KMA Group of Companies, and Channel K, which are providing machinery and skilled workers. CB-KMA Foundation Chairman U Khin Maung Aye is leading the initiative, with an initial fund of 10 billion kyats allocated for relief efforts. — ASH/KNN

Chinese rescue team rescues 4 survivors overnight in Mandalay

THE Chinese rescue team could save four people alive overnight in Mandalay, according to the Embassy of the People's Republic of China in Myanmar.

Jointly by Chinese rescue and Ramunion rescue, three people- a five-year-old child, a pregnant woman and a 29-year-old woman were rescued at 5:37 am and 6:20 am the local time on 31 March after they had been trapped for more than 60 hours inside the Sky Villa which had collapsed in the quake in Mandalay.

Another woman who was trapped in the Great Wall Hotel was saved alive on the same day, it said.

On 30 March at around 10 am, the State Administration Council Chairman Senior General Min Aung Hlaing met Yunnan rescue members and expressed his appreciation for arriving in Myanmar shortly after the quake.

The Chinese rescue team has continued the rescue work in quake-affected areas. — Htun Htun/ZS



This image showcases members of the Chinese rescue team. PHOTO: XINHUA

Dagon Group pledges initial K1B donation for quake relief

DAGON Group has announced that it will donate K1 billion as the first step for earthquake victims' rescue and reconstruction efforts.

Aungban Hotel collapsed due to the earthquake, and Dagon Group has been continuously providing relief and rescue services since 28 March using PC-200 excavators and

heavy earthmoving machinery. This donation was organized by Dagon Group including MAEX Public Co Ltd for resettlement in Mandalay, Sagaing, Aungban and other cities in southern Shan State, it said.

At 6:30 am on 31 March, MAEX Public Co Ltd, led by the Chairman of the Management Committee, MAEX teams, Da-



gon Group, YRYEA members and Medical Team left Dagon Centre 1 in Myaynigon with five vehicles carrying medicine, food, clean water and necessities to the earthquake-stricken areas of Mandalay. — MT/ZN

This photo shows Dagon Group carrying out relief work using an excavator.



People learn about a bionic humanoid robot at the Zhongguancun International Innovation Centre during the 2025 Zhongguancun Forum Annual Conference in Beijing, capital of China, 27 March 2025. **PHOTO: XINHUA**

Artificial intelligence fuels China's high-quality growth

THE rapid development of artificial intelligence (AI) technology, an innovation pillar empowering China's smart manufacturing, green transition and even breakthroughs in space sciences, is proving to be a key driver of the nation's high-quality growth, noted international industry experts at a key forum.

Under the wave of the explosion of AI technology, 2025 will be the first year of large-scale AI application implementation," said Kai-Fu Lee, CEO of 01.AI and chairman of Sinovation Ventures at the 2025 Zhongguancun Forum Annual Conference in Beijing.

Large models have brought about a revolution in productivity, he said, adding that their intelligence continues to improve with the constant emergence of new technologies, marking the advent of an era characterized by large model applications.

A defining application trend showcased at the event is the convergence of AI and new energy vehicles (NEVs), which represents a strategic priority in China's carbon neutrality roadmap. This synergy was epitomized by Li Auto's intelligent driving demonstration, which has captured considerable attention within the industry.

All-scenario navigation assist driving feature developed by the company enables vehicles to autonomously change lanes and overtake, enter or exit ramps, pass intersections in response to traffic lights, and avoid or detour around roadwork obstacles. It has made it easier to drive safely on highways and drive proficiently on urban roads, the company said.

The automotive industry has entered a transformative era of intelligence, marking an evolution from mere transport tools to AI terminals, said Li Xiang, the CEO of the company. — Xinhua

Iran's supreme leader vows "hard" response to any US, Israeli aggression

IRAN'S Supreme Leader Ali Khamenei warned on Monday that any "wicked" action by the United States or Israel against Tehran would be met with a forceful retaliation.

Speaking at Imam Khomeini's Grand Mosalla mosque after leading Eid al-Fitr prayers, Khamenei said threats from Washington and Tel Aviv would not go unanswered.

"They threaten to carry out wicked acts against Iran," he said in remarks broadcast on his official website. "While we do not consider it very likely that such an act will be committed from outside the country, if it happens, they will definitely receive a reciprocal, hard blow."

His comments came after former US President Donald Trump told NBC News on Sunday that the United States would launch unprecedented military strikes on Iran if it refused to negotiate over its nuclear programme.

"If they don't make a deal, there will be bombing," Trump said. "It will be bombing the likes of which they have never seen before."

Trump said negotiations between Washington and Tehran were ongoing but did not provide details.

On Sunday, Iranian President Masoud Pezeshkian confirmed that Tehran had formally rejected a recent US proposal for direct talks, conveyed in a letter from Trump. Addressing a cabinet meeting, Pezeshkian reiterated Iran's refusal to engage in face-to-face negotiations with Washington while sanctions remain in place but left open the possibility of indirect diplomacy. — Xinhua



(FILES) European Central Bank (ECB) President Christine Lagarde speaks to present the bank's 2024 Annual Report to the European Parliament, in Strasbourg, eastern France, on 10 February 2025. Lagarde on 31 March 2025 said that Europe should move towards economic independence as US President Donald Trump prepares to unleash a new wave of tariffs. **PHOTO: AFP**

Trump trade war must prompt Europe 'independence': ECB chief

EUROPEAN Central Bank President Christine Lagarde said on Monday that Europe should move towards economic independence as US President Donald Trump prepares to unleash a new wave of tariffs.

Trump has vowed to impose reciprocal tariffs on a wide range of trade partners on Wednesday, which he has coined "Liberation Day", saying the world's top economy has been

"ripped off by every country in the world".

Lagarde told France Inter radio that Europe faces an "existential moment".

"He calls it 'Liberation Day' in the United States. I see it as a moment when we must collectively decide to take greater control of our destiny and I think it is a step towards independence," she said.

"To put ourselves in a position to negotiate effectively, we have to show that we won't just roll over," Lagarde added, as the European Union readies its response to the US tariffs.

The ECB estimates that Trump's trade war could slash the eurozone's economy by 0.3 per cent in its first year — and by 0.5 per cent if the EU retaliates. "A trade war creates only losers," Lagarde said. — AFP